

the Tulane | First Floor Plan



Community: [3700 Gildas Path Pflugerville, TX 78660](#) Or Call Us: [512-401-3213](#)

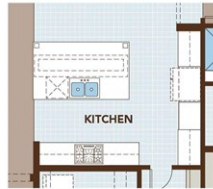
© Gehan Homes. All Rights Reserved.

Website prices are not updated automatically. See Salesperson for the most updated pricing. Advertised prices may not include promotions, incentives, features, options, lot premiums. Proposed amenities, site and floor plans, elevations, designs, artist renderings or dimensions associated with the overall project and the units may be preliminary in nature and are subject to change without notice. Square footage and dimensions are estimated and may vary in actual construction. Community Association fees may be required.

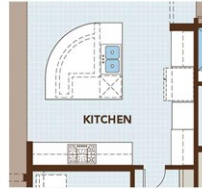
This is not an offer to sell, or solicitation of an offer to buy, any unit in states where such solicitation cannot be made. A public report is available at the State Real Estate Department's website. Gehan Homes of Arizona, LLC, AZ ROC # 281891



the Tulane | Floor Plan Options



Opt. Island #1



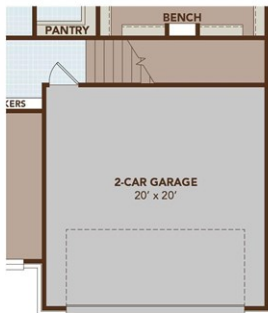
Opt. Island #2



Opt. Gameroom



Opt. Bedroom #4 w/ Bath #3



First Floor w/ Opt. Gameroom



Opt. Powder

REV 05.20.19

39

Community: [3700 Gildas Path Pflugerville, TX 78660](#) Or Call Us: [512-401-3213](#)

© Gehan Homes. All Rights Reserved.

Website prices are not updated automatically. See Salesperson for the most updated pricing. Advertised prices may not include promotions, incentives, features, options, lot premiums. Proposed amenities, site and floor plans, elevations, designs, artist renderings or dimensions associated with the overall project and the units may be preliminary in nature and are subject to change without notice. Square footage and dimensions are estimated and may vary in actual construction. Community Association fees may be required.

This is not an offer to sell, or solicitation of an offer to buy, any unit in states where such solicitation cannot be made. A public report is available at the State Real Estate Department's website. Gehan Homes of Arizona, LLC, AZ ROC # 281891

